



edtea

Department :
Economic Development, Tourism and
Environmental Affairs

PROVINCE OF KWAZULU-NATAL



Institute of
Natural Resources



uMGUNGUNDLOVU
UMASIPALA - WESIFUNDA
DISTRICT MUNICIPALITY
DISTRIK MUNTISIPALITATI

UMHLAHLANDLELA WEZOKUPHATHWA KWEMVELO WOMKHANDLU WESIFUNDA SASE MGUNGUNDLOVU

ISETHULO

Umkhandlu Wesifunda uMgungundlovu - UMDM uzibophezele ekwakheni umhlahlandlela wezokuphathwa kwezemvelo - Environmental Management Framework (EMF). Lomhlahlandlela owakhiwayo uzohamba ezinyathelweni zohlelo oseluphathuliwe oluqondene lokunakekelwa Nokuhlonzwa kwezemvelo - Strategic Environmental Assessment and Management Plan (SEAMP) . Kubalulekile ukuthi lonke ulwazi olumayelana nezemvelo oluqokethwe kwi SEMP lwenziwe kangcono ukuze kube nokuqonda kabanzi ngamathuba akhona kuthathwe izinqumo ezifanelekile ngokuhlelwa kwentuthuko yomkhandlu wesifunda. Okunye okubalulekile ngalomhlahlandlela ukuba waziswe ngokusemthethweni ukuze usetshenziswe ekuthathweni kwezinqumo eziqondene nomkhandlu wesifunda.

Kunesidingo sokuthi amaphuzu agqamile kwi SEA aqhutshezelwe phambili, esingabala izindawo ezibekwe eqhulwini ngokwezethuthuko - Key Spatial Focus Areas (KFAs) nokudala ingcindezi kwezemvelo, lokhu kubalulekile ukuthi kuqondiswe ukuze kufinyelelwe kwizinqumo ezifanelekile zokuhlelwa kwentuthuko yesifunda engakhinyabezi imvelo.

Institute of Natural Resources NPC (INR) iqokiwe ukuhlanganisa lomhlahlandlela wokuphathwa kwezemvelo wesifunda saseMgungundlovu. INR inhlango yezocwaningo elekelela kakhulu ngokucubungula imigomo emayelama nokuphathwa nokwenganyelwa kwezemvelo. Lenhlango isibe negalelo elibonakalayo ekwakhiweni kwemihlahlandlela yokuphathwa kwezemvelo kwisifunda saseMgungundlovu.

INHLOSO YALOKUSHICILELA

Ukuveza isithombe esibanzi ngokuqokethwe kumhlahlandlela, ukuze yonke imikhakha ethintekayo ikwazi ukunikezwa ithuba lokubamba iqhaza ekwakhiweni kwalomhlahlandlela ngokuzwakalisa imibono ezosiza ukwakha umhlahlandlela.

INCAZELO NGE PROJEKTHI

Isikhathi : Izinyanga eziyishumi nambili (12) (Kuqalwe ngomhlaka 31 May 2016)

Izinjongo kanye Nenhloso Project: Inhloso-Ngqangi yoMhlahlandlela ukulekelelele umasipala ukuhlela intuthuko kanye nokuthatha izinqumo ezifanekile ngokuhambisana nemigomo yokwengamela ezemvelo ngaphansi komkhandlu wesifunda uMgungundlovu. Lokhu kuhambisana nokuhlangabezana nalemigomo nemiphumela ebalwe ngezansi:

Ukusungula imigomo yokuthathwa kwezinqumo - Decision Support Tool (DST) engemihle yenziwe imigomo ezolandelwa uma kuhlelwa intuthuko

- i. Lemigomo kumele yenze kubelula ukuqonda iziphazamiso ezingabakhona uma kuhlelwa ukusetshenziswa komhlaba.
- ii. Lemigomo kanye nokusebenza kwayo, kufanelekile ukuthi iqondwe futhi isebenziseke kulabo abathintekayo .
- iii. Imigomo kumele ikwazi ukusebenziseka futhi iqondisiswe kahle yilabo okumele bathathe izinqumo
- iv. Kumele ihambisane nemithetho ebekiwe.

Kuyona yonke lemigomo ebalwe ngenhla, u-INR uqonda ngokugcwele ukuthi inhloso yomhlahlandlela ukulekelela umkhandlu ukhlela nokwenza izinqumo eziyizo uma kuhlelwa intuthuko ngaphansi komkhandlu wesifunda saseMgungundlovu.

Imigomo yomhlahlandlela inezigaba ezine kanye nemibandela ezichazwe kafushane ngezansi:

- i. Ukubaluleka kokubakhona koMhlahlandlela
- ii. Ukucubungula isimo samanje (okumbandakanya ukuhlaziya okumele kuqashelwe, amathuba akhona kanye nezinto ezingaba yizithiyo.
- iii. Ukwamukeleka kwesimo ngokwemigomo yezemvelo
- iv. Indlela eyaphambili (ezocacisa ngemigomo ezolandelwa).

Umhlahlandlela wezemvelo ohlanganiswe uMnyango Wezemvelo unezigaba ezicacisa ngokuqondene nemikhakha ethize. Okubalulekile okuzoba yisiqalo somhlahlandlela ukuchaza kabanzi izigaba okuzobukelwa kuzo ukuze kuqhutshwe lomsebenzi. Lokhu kuyisigaba esibalulekile kakhulu ngokuqondene nomkhandlu waseMgungundlovu, ngoba lezigaba ezine ezibalwe ngenhla zibaluliwe ngaphansi kohlelo oliyisuKwenza Lwezokuphathwa nokunakekelwa kwemvelo - SEAMP.

Ukwengeza kuhlelo loMgungundlovu SEAMP, kunezigaba ezimbili esezivele zifakiwe ezigudla kumngcele womkhandlu wendawo uMsunduzi kanye ne Albert Falls. Ngakho ke umhlahlandlela wezemvelo woMgungundlovu kumele ugxile kulezihloko ezilandelayo:

- i. Ukuqhubeka lapho kwagcina khona I SEAMP ukuze umhlahlandlela uhambisane nemigomo ukhangiswe ngokusemthethweni. UMDM ngokubambisana neminye iminyango ethintekayo babuyekeza imiphumela ye SEAMP. Kulokhu kubuyekeza nazi izihloko ezigqamile okumele zicatshangiswe ekuthatheni izinqumo nokufanele umhlahlandlela ungazishiya ngaphandle:
 - a. Izizinda zamanzi:
 - Ukukhiqizwa kwamanzi
 - Amanzi asezingeni elifanele
 - Amaxhaphozi
 - Izindawo ezinenkinga yezikhukhula
 - b. Izizinda zezemvelo Kanye nezimila
 - c. Ezolimo
 - d. Inggqalasizinda
- ii. Amasu okuqhamuka nomhlahlandlela odidiyele zonke izizinda ezikhona nezithintekayo.
- iii. Ukucacisa ngokubanzi izindawo okumele kugxilwe kuzo ezimayelana nezemvelo.
- iv. Ukuqamba indlela yokugcina lonke ulwazi – Environmental Information Management System ezokwenza kubelula ukutholakala kolwazi, iphinde ihambisane nendlela umkhandlu ogcina ngayo ulwazi ngokusebenzisa ibalazwe-lwazi GIS. Lokhu kuzosiza ukuthi ulwazi lutholakale kalula uma kufanele kuhlelwe, kuthathwe izinqumo.

- v. Umhlahlandlela - kumele ube nalezizigaba:
 - a. Ibalazwe lezinzinda zemvelo .
 - b. Ubonakalise imisebenzi yokongiwa/yokunakekelwa kwemvelo eyenziwayo kanye nezindawo ezikhethiwe;
 - c. Ukhombise ukuthi umhlaba usetshenziselani ;
 - d. Uphinde ubalule imigomo yokunakekelwa kwemvelo okumele ilandelwe :
 - Ukuhlonza umhlaba ofanelekile ukusetshenziswa.
 - Ukuhlonza umhlaba ongafanelekile ukusetshenziswa
 - Imisebenzi ehlongozwayo yenziwe ngokwezincwadi zokuhlola kwezemvelo
- vi. Ukuhlenganisa imigomo ezolandelwa yokusetshenziswa komhlaba ukuze kudidiyelwe kwimibandela yezokusetshenziswa komhlaba ongaphansi komkhandlu.

IZINDAWO EZIKHETHIWE

Umkhandlu wesifunda saseMgungundlovu wengamele omasipala abayisikhombisa (7). Izindawo okugxilwe kuzo (KFAs) zilinganisene nomgwaqo onguthelawayeka - N3 oxhumanisa iTheku noMgungundlovu (ufinyelele eBaynesfield); Midmar, Howick , Hilton ; kanye namanye amadolobha amancane okuyi Mooi River/Nottingham Road; Richmond/Byrne; uze uyofika eNew Hanover/Wartburg. Lezindawo zikhonjiswe kwibalazwe elingezansi - Figure1

UKUQONDISISA NGOMHLAHLANDELA

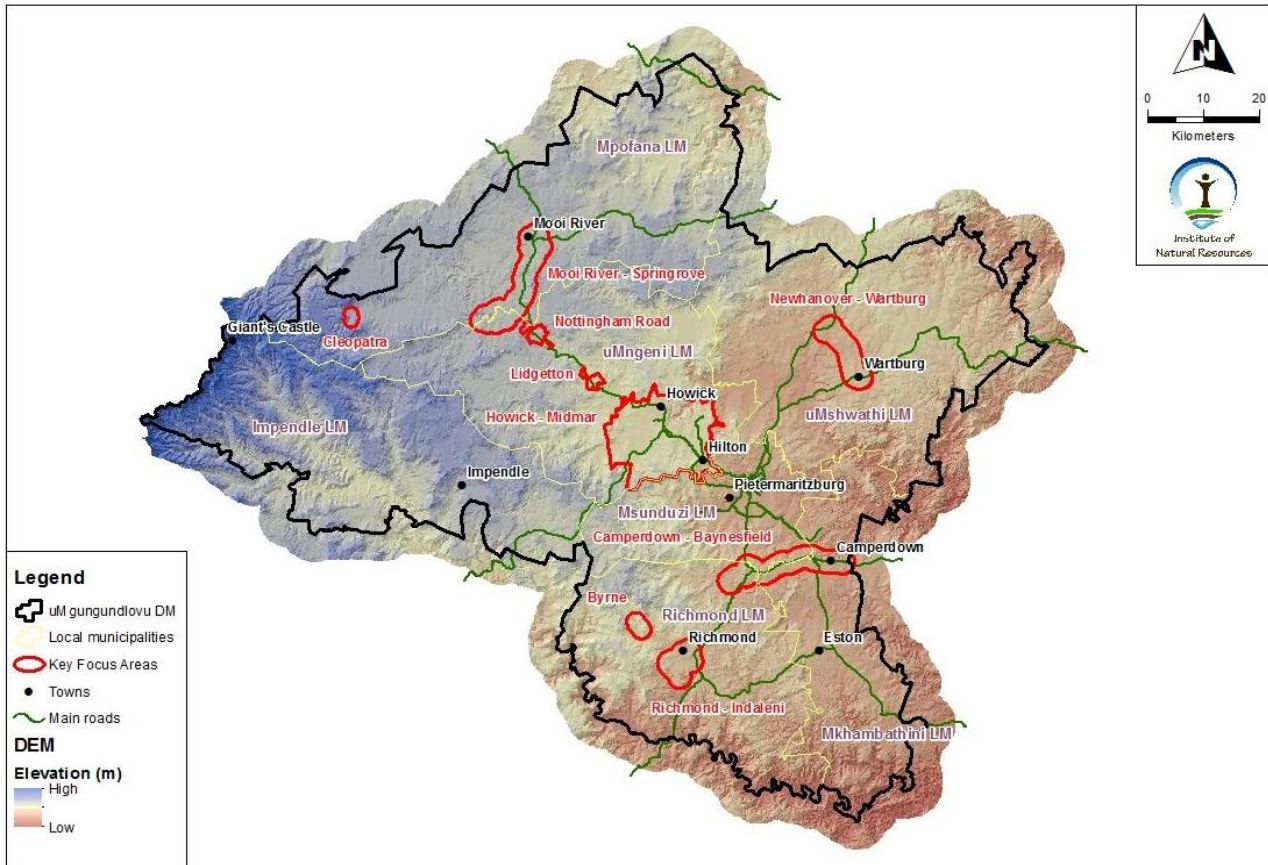
EMFs iwuhlaka olusha endimeni yokuphathwa kwezemvelo edidiyelwe - Integrated Environmental Management (IEM), isuselwa kumgomo wokuhlola imithelelela kwezemvelo - Environmental Impact Assessment (EIA) Regulations eshicilelwe ngokwesigaba somthetho - Section 24(5) kaZwelonke wezokuphathwa kwezemvelo (NEMA) owakhishwa ngo July 2006. Yonke lemithetho yenzelwe ukulekelela intuthuko eqhubekayo.

Ukufeza lezinhlalo, lomhlahlandlela kumele uhlangabezane nalezi njongo:

- Ukwenza ulwazi lutholakale kalula ukulekelela ukwenziwa kwezicelo zemiklamo yentuthuko kanye nokuthatha izinqumo eziyizo.
- Ukukhipha izexwayiso ngesikhathi ukuze kuncishiswe umonakalo kwimvelo.
- Ukukhombisa ngokusobala lapho kuvumeleke ukwenza imisebenzi ngokwemigomo ye NEMA
- Ukukhombisa ngokusobala izindawo okungafanele ziphazamiseke ngokwemigomo ye NEMA

Umhlahlandlela - EMF unalemihlomulo elandelayo ehlobene nemigomo yezokuhlolwa komthelela kwezemvelo – EIA:

- Ukukhombisa abafaki zicelo zokwenza imisebenzi ukuthi yiziphi izindawo abangasebenza kuzo noma ezinomhlaba ongasebenzeka
- Inhlolovo edidiyele ngokwenhlalo, ezomnotho kuleyondawo ekethekile
- Ukubalula izigaba zemithetho okumele ilandelwe njengezimvume namagunya okumele kutholakale ngaphambi kokuqala imisebenzi ethize
- Ukubalula izinguquko ezingaba khona ngokuqhubeka kwesikhathi okumele ziqashelwe



IZINDAWO EZIKHETHIWE – OKUZOGXILWA KUZO NGAPHANSI KOMKHANDLU WASEMGUNGUNDOVU

IMIBUTHANO YEZINHLAKA ZEMIPHAKATHI

Imibuthano yezinhlaka zemiphakathi yisigaba esibalulekile kakhulu ekwakhiweni komhlahlandlela- EMF ngoba uvula inkundla yokuzwakalisa imibono nezimvo kulabo abathintekayo ukuze kuthathwe izinqumo ezifanelekile : Nazi izigaba ezizolandelwa ukuqinisekisa ukuzwakaliswa kwemibono.

▪ **Ukubhalisa**

- Abathintekayo - I&APs bangabhalisa ngokulandela ngokusebenzisa lemininingwane ye INR webpost (<http://inr.org.za/development-of-an-environmental-management-framework-for-the-umgungundlovu-district-municipality/>) noma bathintane ngqo nabakwa kwimininingwane ebhalwe ekugcineni kwalesaziso.

▪ **UMBUTHANO WOKUQALA WEZINHLAKA ZOMPHAKATHI**

- *Inhloso*: Inhloso yomhlangano ukuzokwethula izinjongo, nendlela ezosetshenziswa ukuqhuba ukwakhiwa komhlahlandlela kanye nokwazisa zonke izinhlaka ezithintekayo ukuba zibhalise ngokusemthethweni.
- *Izaziso*: Bonke abathintekayo - I&APs bazokwaziswa ngemibuthano yezinhlaka zomphakathi ngokukhipha izikhangiso emaphephandabeni (The Witness & Isolezwe), isikhangiso esizofakwa kwi INR webpost kanye UMDM website, Kanye nezinye izindlela zokuxhumana.
- *Indawo*: UMDM Council Chambers - 242 Langalibalele Street, Pietermaritzburg.
- *Isikhathi*: Amahora amabili kuya kwamathathu 2-3 hours lapho kuzobe kwenziwa izethulo bese kulandela imibuzo nezimpendulo
- *Usuku nesikhathi* : Ulwesibili 23 August 2016 ngehora lesithupha ntambama - 18:00.

▪ **UMHLANGANO WABAHOLI BENDABUKO**

- *Inhloso*: Inhloso yomhlangano ukuzokwethula izinjongo, nendlela ezosetshenziswa ukuqhuba ukwakhiwa komhlahlandlela nokunikezela abaholi bendabuko ithuba lokuzwakalisa izimvo. Lomhlangano okhethekile owabaholi bendabuko kuphela.
- *Indawo* : KZN CoGTAs Umgungundlovu Ehhovisi Labaholi Bendabuko - Local House of Traditional Leaders Department office - Office number 4, Wadley House (Whitby Lodge) 115 Jabu Ndlovu Street, Pietermaritzburg
- *Uhlelo oluzolandelwa*: Izethulo Kanye nethuba lemibuzo nezimpendulo
- *Usuku nesikhathi*: uLwesine 8 September 2016 (isikhathi sisazoqinisekiswa).

▪ **UMBUTHANO WESIBILI WEZINHLAKA ZOMPHAKATHI**

- *Inhloso*: Ukwethula usinga-mhlahlandlela - Draft EMF nokunikezela izinhloko ukuthi zizwakalise imibono yazo.
- *Isaziso*: Bonke abathintekayo - I&APs bazokwaziswa ngemibuthano yezinhloko zomphakathi ngokukhipha isikhangiso esizofakwa kwi INR webpost kanye UMDM website, Kanye nezinye izindlela zokuxhumana
- *Indawo*: UMDM Council Chambers – 242 Langalibalele Street, Pietermaritzburg
- *Uhlelo oluzolandelwa*: Amahora amabili kuya kwamathathu -2-3 Izethulo Kanye nethuba lemibuzo nezimpendulo
- *Usuku nesikhathi*: uLwesibili 14 March 2017 ngehora lesithupha ntambama - 18:00 (leminingwane izoqinisekiswa ngokuhamba kwesikhathi).

▪ **UKUBUYISWA KWEZIMPENDULO KANYE NEMIBONO**

- Iminingwane ngeprojekthi iyatholakala kwi INR webpost, uma ufuna imininingwane eyengeziwe ungaxhumana nehovisi lakwa INR
- Ngokwemigomo ye umsebenzi owenzeke ngempumelelo uzokwengezwa kwi INR webpost ukuze abafisa ukuphawula bathole ithuba.
- Imibono ngokwakhiwa komhlahlandlela EMF ingazwakaliswa ngokubhala ngeSingisi noma ngeSizulu ithunyelwe kwa INR ngekheli leposi, isikhahlamezi noma ngekheli lonyazi . Lelithuba lokuzwakalisa imibono livulelekile kuze kuphothulwe umsebenzi wokwakhiwa komhlahlandlela
- Isigaba sokuqala somhlahlandlela sizosatshalaliswa kwabathintekayo ngo (February/March 2017)
- Isigaba sokugcina somhlahlandlela sizosatshalaliswa kwabathintekayo ngezindlela ezahlukene zokusabalalisa imibiko ukuze bonke abathintekayo bawuthole. Distribution of Final Draft EMF report to all I&APs, both electronically and hard copies (which will be made available at central, publically accessible locations).

ISAZISO SOKUBAMBA IQHAZA

Abathintekayo bayacelwa ukuba babhalise ngokuthumela imininingwane ebhalwe ngezansi .

UNGAXHUMANA NO: Mrs. Sian Oosthuizen

P.O. Box 100396, Scottsville, 3209

Tel: 033 3460 796; Fax: 033 3460 895

Email: soosthuizen@inr.org.za



Institute of
Natural Resources